

Instructions for Obtaining Patient-Collected Vaginal Swab and Penile Meatal Swab Specimens with the Aptima® Multitest Swab Specimen Collection Kit

HOLOGIC®

IVD

Aptima®

NOTE: Carefully follow procedures as specimen collection is important for reliable results. If you have any questions about this procedure, please ask your doctor, nurse, or care-provider.

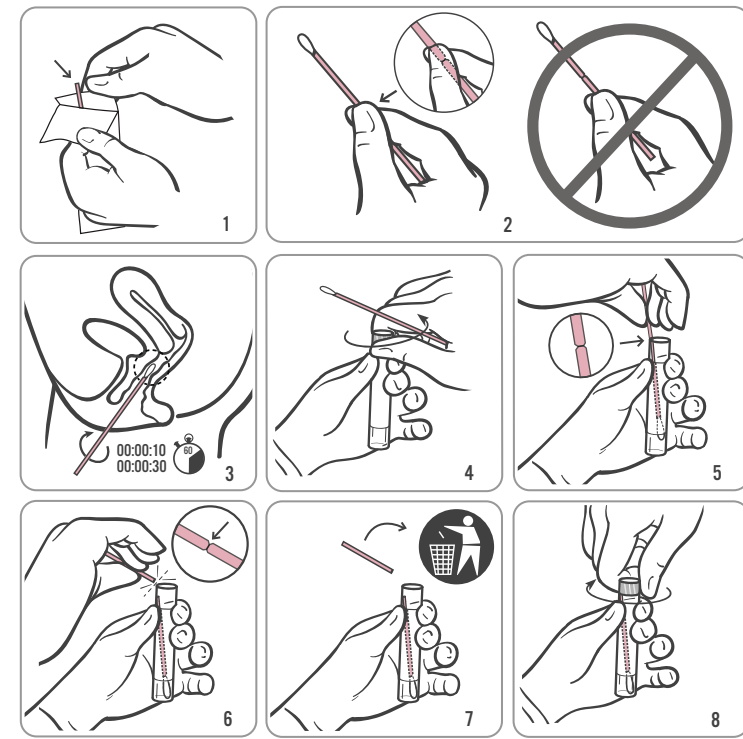
Wash your hands before starting.

In the privacy of the examination room or restroom, you will need to undress, as necessary. You will need to comfortably position yourself to maintain balance during the collection procedure.

Open kit package. Remove the swab and the tube. Set the tube aside before beginning instructions below.

WARNING: If the contents of the tube are spilled on your skin, wash the affected area with soap and water. If the contents of the tube are splashed in your eyes, immediately flush your eyes with water. Notify your doctor, nurse, or care-provider if irritation develops. If the contents of the tube are spilled, request a new Aptima Multitest Swab Specimen Collection Kit. Do not take internally.

1. Partially peel open the swab package as shown in Diagram 1. Remove the swab.
Do not touch the soft tip or lay the swab down.
If the soft tip is touched, the swab is laid down, or the swab is dropped, request a new Aptima Multitest Swab Specimen Collection Kit.
2. Hold the swab in your hand as shown in Diagram 2, placing your thumb and forefinger in the middle of the swab shaft covering the score line (black line).
Do not hold the swab shaft below the score line (black line).
3. Carefully insert the swab into your vagina about 2 inches (5 cm) inside the opening of the vagina (as shown in Diagram 3) and gently rotate the swab for 10 to 30 seconds. Make sure the swab touches the walls of the vagina so that moisture is absorbed by the swab and then withdraw the swab without touching the skin.
4. While holding the swab in the same hand, unscrew the cap from the tube as shown in Diagram 4.
Do not spill the contents of the tube. If the contents of the tube are spilled, request a new Aptima Multitest Swab Specimen Collection Kit.
5. Immediately place the swab into the transport tube so that the score line (black line) is at the top of the tube as shown in Diagram 5.
6. Carefully break the swab shaft at the score line (black line) against the side of the tube as shown in Diagram 6.
7. Immediately discard the top portion of the swab shaft as shown in Diagram 7.
8. Tightly screw the cap onto the tube as shown in Diagram 8. Return the tube as instructed by your doctor, nurse, or care-provider.



SELF-COLLECTED VAGINAL SWAB SPECIMEN PATIENT INFORMATION SHEET

- A self-collected vaginal swab is one way to test for sexually transmitted infections (STIs). Other options are available. If you have questions about the self-collected vaginal swab, other sample collection options, or about STIs, consult your doctor, nurse, or care-provider.
- Vaginal swab self-collection is an option in healthcare facilities if you agree to perform the procedure. Counseling from your doctor, nurse, and care-provider is available for the self-collection procedure.
- Carefully read the vaginal swab self-collection instructions above. If you feel you can perform this self-collection procedure and wish to use this method of testing for STIs, inform your doctor, nurse, or care-provider.

IMPORTANT INFORMATION TO CONSIDER

- IF YOU ARE PREGNANT, PLEASE INFORM YOUR DOCTOR, NURSE, OR CARE-PROVIDER.
- Before you collect a vaginal swab specimen, inform your doctor, nurse, or care-provider if you have:
 - recent pelvic pain
 - pain with sexual intercourse
 - unusual vaginal discharge or bad odor

These symptoms can be due to pelvic inflammatory disease (PID). Prompt diagnosis and treatment of PID can help prevent infertility and ectopic pregnancy associated with PID.

- Do not take this collection kit or your self-collected vaginal specimen home or out of the clinic.

Instructions for Obtaining Patient-Collected Vaginal Swab and Penile Meatal Swab Specimens with the Aptima® Multitest Swab Specimen Collection Kit

HOLOGIC®

IVD

Aptima®

NOTE: Carefully follow procedures as specimen collection is important for reliable results. If you have any questions about this procedure, please ask your doctor, nurse, or care-provider.

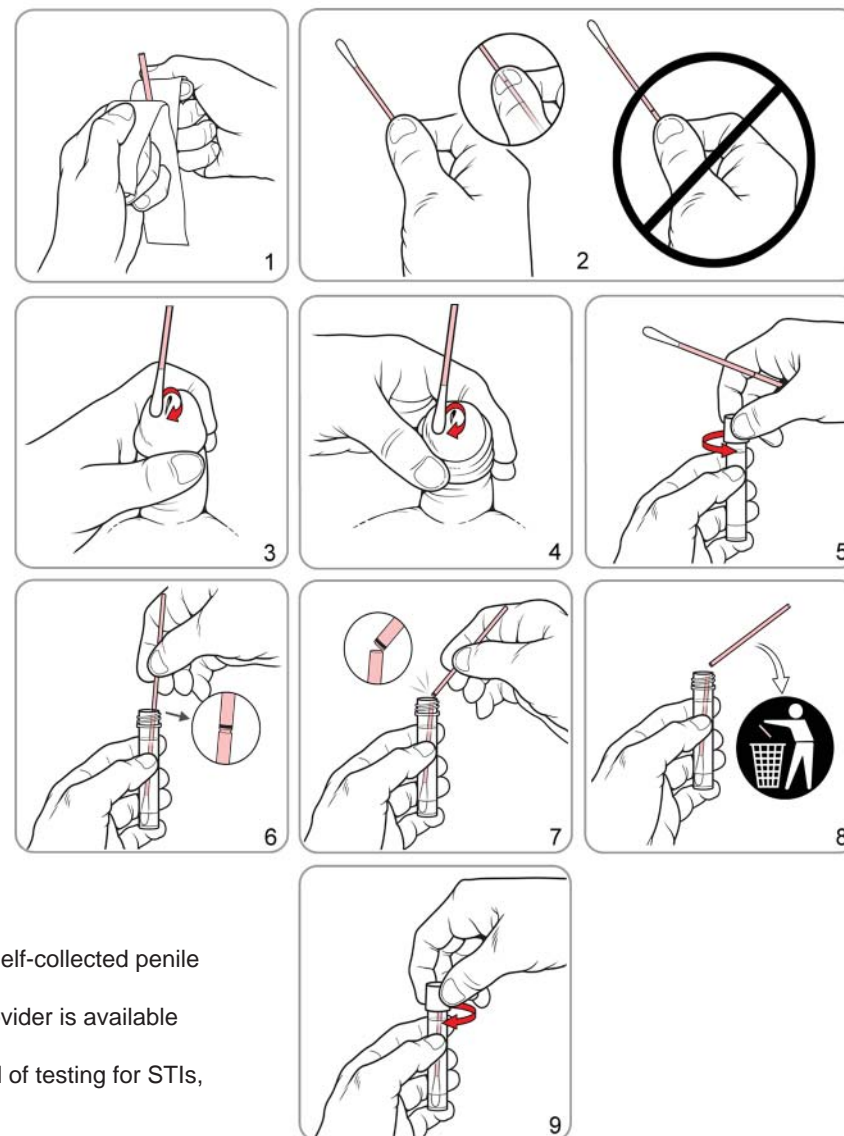
Wash your hands before starting.

In the privacy of the examination room or restroom, you will need to undress, as necessary. You will need to comfortably position yourself to maintain balance during the collection procedure.

Open kit package. Remove the swab and the tube. Set the tube aside before beginning instructions below.

WARNING: If the contents of the tube are spilled on your skin, wash the affected area with soap and water. If the contents of the tube are splashed in your eyes, immediately flush your eyes with water. Notify your doctor, nurse, or care-provider if irritation develops. If the contents of the tube are spilled, request a new Aptima Multitest Swab Specimen Collection Kit. Do not take internally.

- Partially peel open the swab package as shown in Diagram 1. Remove the swab.
Do not touch the soft tip or lay the swab down.
If the soft tip is touched, the swab is laid down, or the swab is dropped, request a new Aptima Multitest Swab Specimen Collection Kit.
- Hold the swab in your hand as shown in Diagram 2, placing your thumb and forefinger in the middle of the swab shaft covering the score line (black line).
Do not hold the swab shaft below the score line (black line).
- See Diagram 3 if you are circumcised (no foreskin) or Diagram 4 if you are not circumcised. Uncircumcised men will have to roll the foreskin down before starting collection. Hold the penis with your free hand (hand with no swab). Using your other hand (with the swab), roll the swab just at the tip or outside the opening to the penis through which you pass urine (pee). Be sure to roll the swab completely around the opening to get the best sample. It is not necessary to put the swab deep inside the opening of the penis.
- While holding the swab in the same hand, unscrew the cap from the tube as shown in Diagram 5.
Do not spill the contents of the tube. If the contents of the tube are spilled, request a new Aptima Multitest Swab Specimen Collection Kit.
- Immediately place the swab into the transport tube so that the score line (black line) is at the top of the tube as shown in Diagram 6.
- Carefully break the swab shaft at the score line (black line) against the side of the tube as shown in Diagram 7.
- Immediately discard the top portion of the swab shaft as shown in Diagram 8.
- Tightly screw the cap onto the tube as shown in Diagram 9. Return the tube as instructed by your doctor, nurse, or care-provider.



SELF-COLLECTED PENILE MEATAL SWAB SPECIMEN PATIENT INFORMATION SHEET

- A self-collected penile meatal swab is one way to test for sexually transmitted infections (STIs). Other options are available. If you have questions about the self-collected penile meatal swab, other sample collection options, or about STIs, consult your doctor, nurse, or care-provider.
- Penile meatal swab self-collection is an option in healthcare facilities if you agree to perform the procedure. Counseling from your doctor, nurse, and care-provider is available for the self-collection procedure.
- Carefully read the penile meatal swab self-collection instructions above. If you feel you can perform this self-collection procedure and wish to use this method of testing for STIs, inform your doctor, nurse, or care-provider.

IMPORTANT INFORMATION TO CONSIDER

- Do not take this collection kit or your self-collected penile meatal specimen home or out of the clinic.



Hologic, Inc.
10210 Genetic Center Drive
San Diego, CA 92121 USA

U.S. and international contact information:

Customer Support: +1 844 Hologic (+1 844 465 6442)
customersupport@hologic.com
Technical Support: +1 888 484 4747
molecularsupport@hologic.com



EC REP

Emergo Europe
Molenstraat 15
2513 BH, The Hague
The Netherlands

For more contact information visit www.hologic.com.

Hologic, The Science of Sure, Aptima, and associated logos are trademarks of Hologic, Inc. and/or its subsidiaries in the United States and/or other countries. All other trademarks are the property of their respective owners.

©2016 Hologic, Inc. All rights reserved.
AW-14334-001 Rev. 002
2016-01